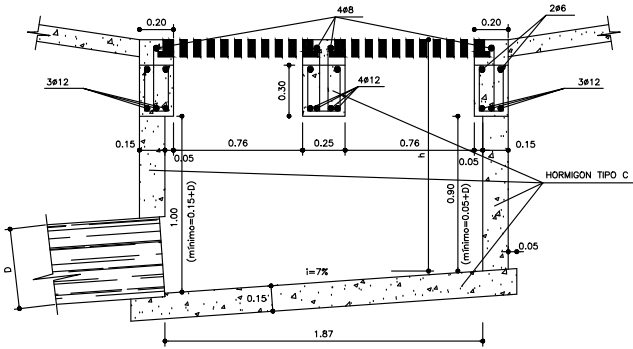
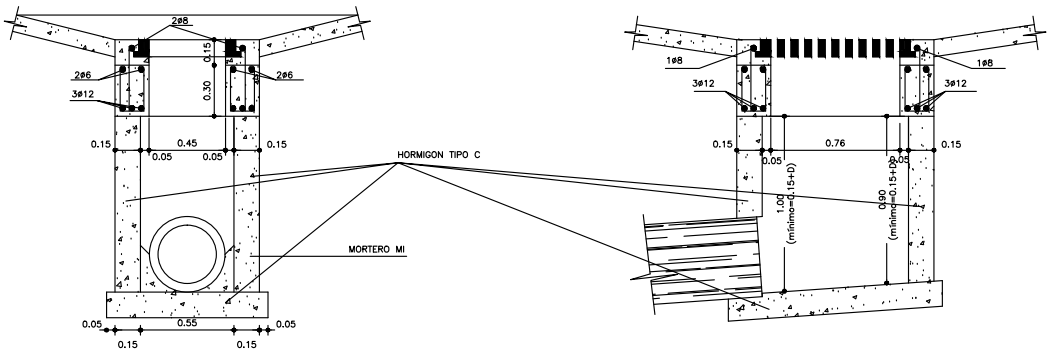


SUMIDERO HORIZONTAL DE DOS REJAS
ESCALA 1:25



CORTE A-A

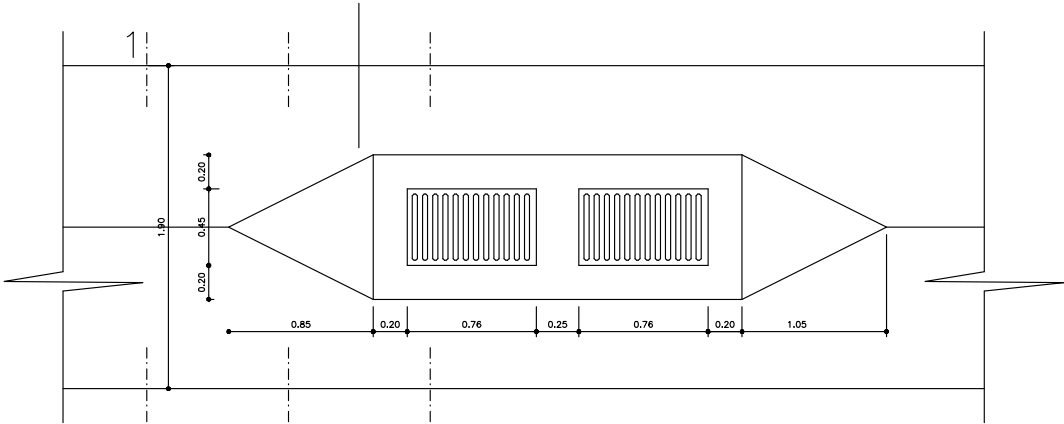
SUMIDERO HORIZONTAL DE DOS REJAS
ESCALA 1:25



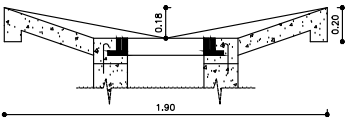
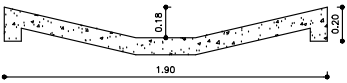
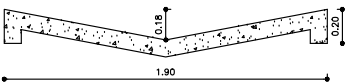
CORTE B-B

CORTE A'-A'

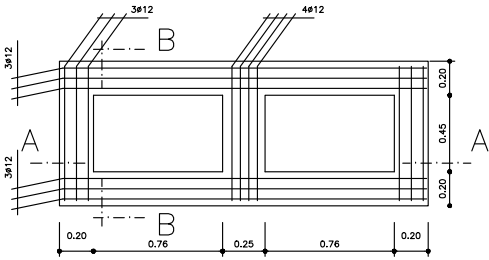
DETALLE DE CUBETA
ESCALA 1:25



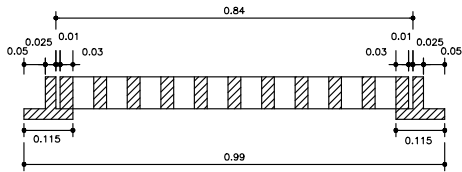
DETALLE DE CUBETA
ESCALA 1:25



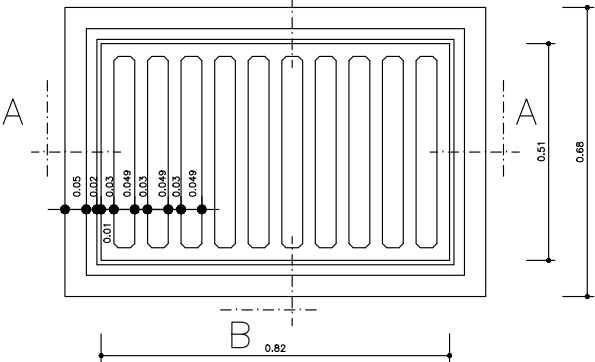
PLANTA ESTRUCTURA
DE HORMIGON



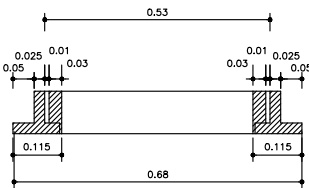
DETALLE DE MARCO Y REJA
ESCALA 1:10



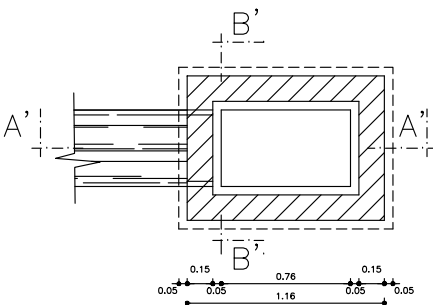
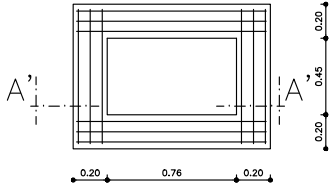
B



B

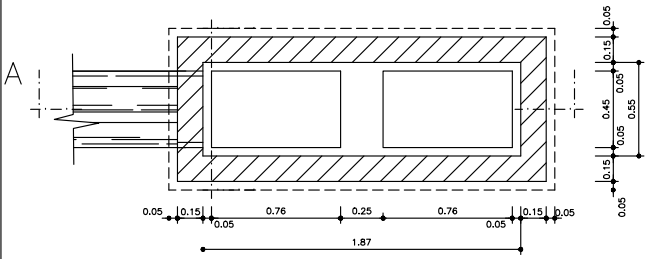


PLANTA ESTRUCTURA
DE HORMIGON



NUMERO DE REJAS	DIAMETRO DE CAÑO DE DESAGÜE
n°	m
1	0.300
2	0.300
3	0.400

PLANTA



SANTA FE	SECRETARIA DE OBRAS PUBLICAS	PT
	DGHys DEPARTAMENTO PLAN INTEGRAL DE INFRAESTRUCTURA SANITARIA	
OBRA:		
PLANO: PLANO TIPO SUMIDERO HORIZONTAL		
OPERADOR: Pablo BELLITTIERI		FECHA: MAYO 2000
DIBUJANTE: PROYECTISTA:		ESCALA: VARIAS
JEFE DEPIS INGENIERO Carlos E. TOGNETTI	SUB DIRECTOR DGHys. INGENIERO Hugo E. ORSOLINI	DIRECTOR DGHys. INGENIERO Alberto J. DANIELE